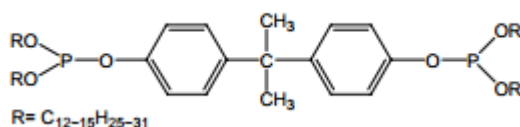

Phostacon MK1500

Phostacon MK1500

Chemical Name: Poly 4,4-isopropylidenediphenol C12-C15 Alcohol Phosphite
CAS No.: 96152-48-6



Technical data

Appearance	Clear liquid
Acid Value	≤0.3 (mg KOH/gm)
Colour (APHA)	≤50
Refractive Index	1.5040 – 1.5095 (25°C)
Specific gravity	0.960– 0.990g/m ³ (25°C/15°C)

Application

Phostacon MK 1500 is used to improve the color, light stability and clarity of PVC and vinyl chloride copolymers. Improved performance is found when MK 1500 phosphite is used in conjunction with primary metal stabilizers and epoxy stabilizers.

Packaging

Available packaging: 200KG steel drums and 1.000kg IBC.